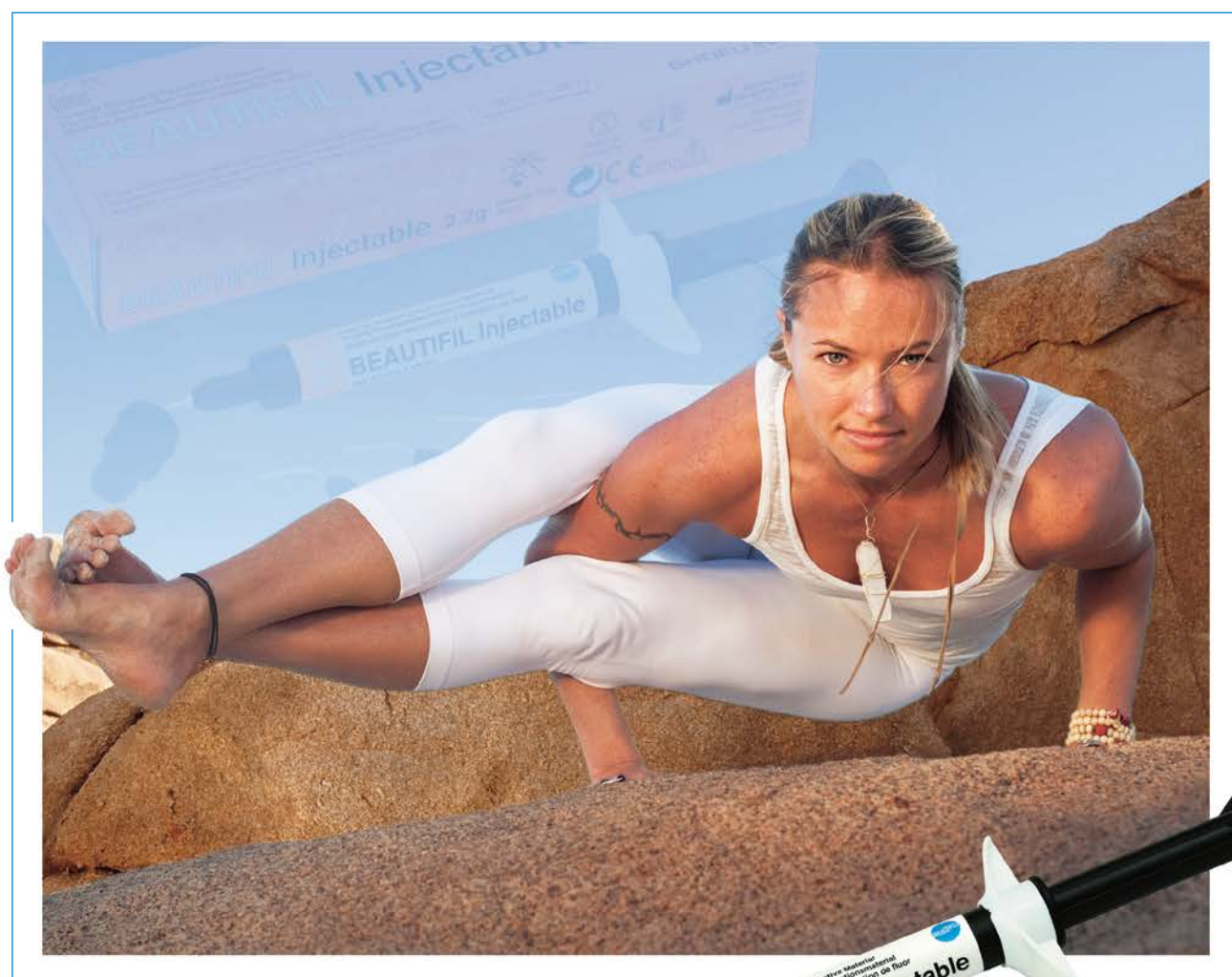


BEAUTIFIL Injectable

Direct Aesthetic Restorative Material



BEAUTIFIL Injectable

Inject beauty and strength into your restorations with **BEAUTIFIL Injectable**, the only universal aesthetic restorative of its kind that comes in an injectable syringe.

This novel aesthetic material of the Giomer family has carved a niche in direct cosmetic dentistry, by offering life-like aesthetics, durability, optimal viscosity and sustained fluoride protection with the convenience of direct delivery.

Created for

- Class I through Class V direct restorations including marginal ridge of Class II cavities
- Direct Veneers & Core Build-up
- Shade / Shape Modification in direct and indirect aesthetic restorations
- Restoration of Cuspal and Occlusal topography
- Minimally invasive anterior and posterior restorations
- Geriatric and Pediatric Restoration
- Repairing of Composite and Ceramic restorations
- Splinting of Mobile teeth



Fractured Central and Lateral Incisors



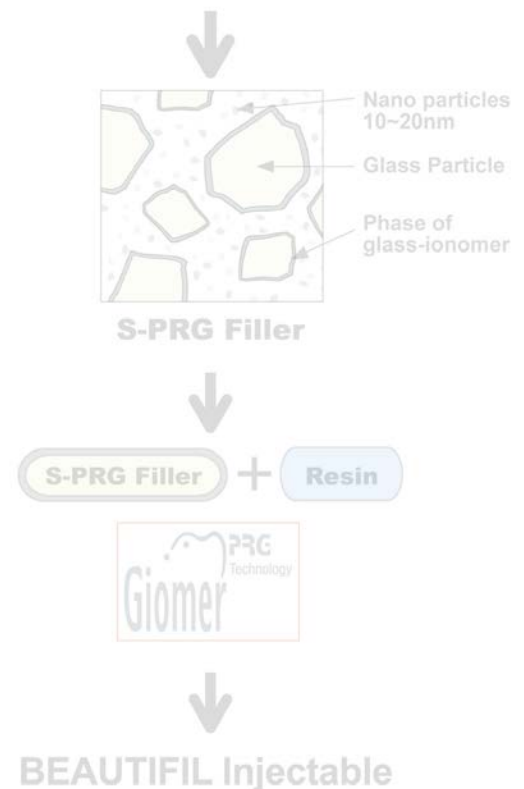
Carious Lower Premolar



Restoring Occlusal Anatomy

S-PRG TECHNOLOGY

Glass-ionomer reaction on the surface only



Photographs courtesy of Dr. Sushil Koirala

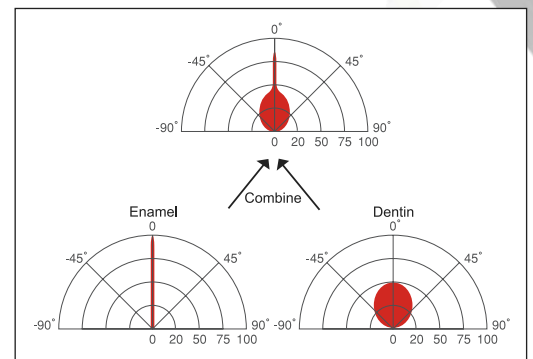
In a LEAGUE of its own ...

- Ideal viscosity that adopts the desired shape
- Non-tacky nature for ease of application
- Unique resin structure assures optimal cure every time
- Superior mechanical properties enable universal application
- Efficient injectable delivery to restoration site that reduces instrumentation and working time
- Life-like optical characteristics for indiscernible restorations
- Natural Opalescence and Fluorescence
- Proven S-PRG technology provides fluoride rich environment with anti-plaque effect
- Remarkable radiopacity

Life-like Restorations

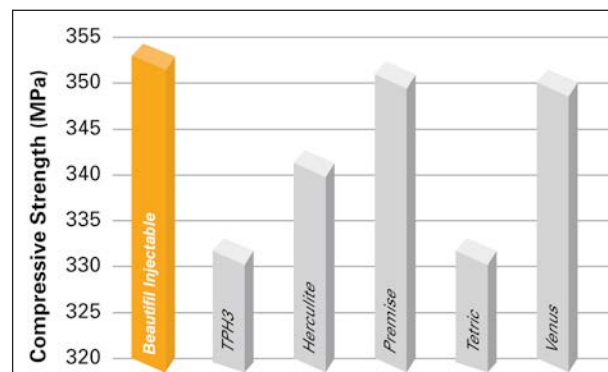
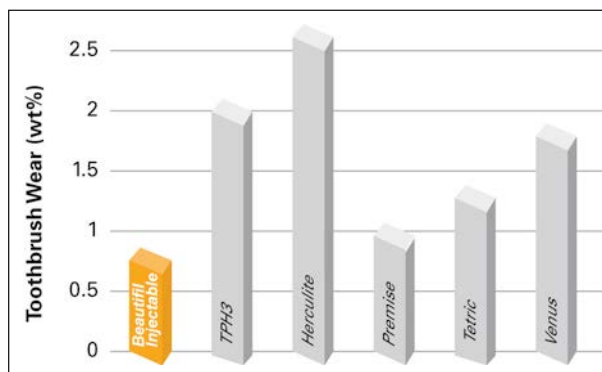
The filler-matrix complex is optimized for controlled light diffusion within the material for a more vivid restoration that blends imperceptibly in the oral environment.

In addition to a natural brilliance, the nano-hybrid filler structure enables a high gloss polish that retains over time and resists discoloration.



Extraordinarily Strong & Durable

The unique resin micro-structure and filler composition of Beautifil Injectable imparts superior mechanical properties, high wear resistance and remarkable yield strength to guarantee a confident anterior and posterior restoration.



Injectable & Stackable

Beautifil Injectable simplifies the entire restoration process as the material is conveniently delivered to the restoration site, and sculpted as you extrude. The non-tacky, non-droopy paste has ideal viscosity and adapts easily to the desired shape, completely eliminating the need for laborious manipulation during incremental layering of the material.

Predictable Shades to choose from ...

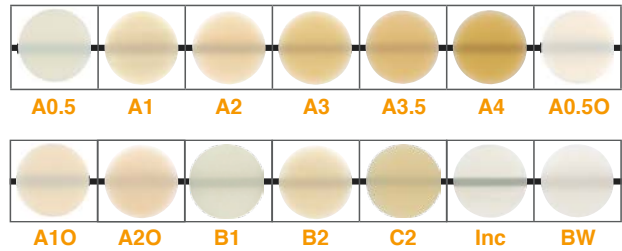
Beautiful Injectable comes in a range of shades that mimic the variation in light transmission and diffusion through enamel and dentin, for a close match to the natural tooth.

Opacious Dentin Shades: SA0.5O, A1O, A2O

Universal Shades: SA0.5, A1, A2, A3, A3.5, A4,
B1, B2, C2

Enamel Shade: INC

Bleach White shade: BW



Order Information



BEAUTIFIL Injectable (Available in 11 shades)
2.2g, Needle Tips x 5pcs



SHOFU DENTAL INDIA PRIVATE LIMITED

D-3/3,OKHLA INDUSTRIAL AREA,PHASE-II ,NEW DELHI, 110020 INDIA
TEL:(91) 11494 41400 FAX:(91) 11494 41401 E-mail: info@shofudental.co.in