

BeutiSealant

Fluoride Releasing Pit & Fissure Sealant



BeutiSealant

Preventive solutions have been successfully integrated into routine dental practice to ensure life-long protection against dental caries. A dental sealant is a non-invasive treatment technique that preserves tooth structure by providing a physical barrier and preventing the ingress of oral bacteria as well as dietary carbohydrate.

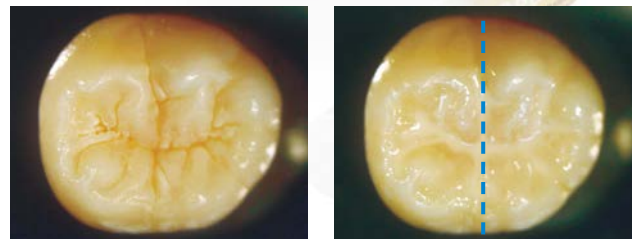
BeutiSealant is a fluoride releasing pit and fissure sealant that seals deep grooves and fissures while providing all round protection especially during the caries-prone years through the sustained release and recharge of fluoride. Advances in modern adhesive technology have paved the way to the development of BeutiSealant, a safer, simpler and more predictable system that completely eliminates the need for conventional phosphoric acid etch while assuring a durable bond to the tooth structure.

Features

- Remarkable handling characteristics and a bubble-free consistency
- Ideal viscosity and accurate delivery facilitates flow into difficult to reach grooves and fossae
- High shear bond strength for long-term durability and retention
- Radiopacity equal to dentin
- Provides a fluoride rich environment

Gentle on Enamel

Conventional sealants require phosphoric acid etching which can dehydrate and demineralize healthy tooth structure. BeutiSealant self-etch primer contains dual adhesive monomers that thoroughly penetrate into deep pits and fissures to prime the tooth surface for an effective chemical bond to the sealant while minimizing any damage to enamel.

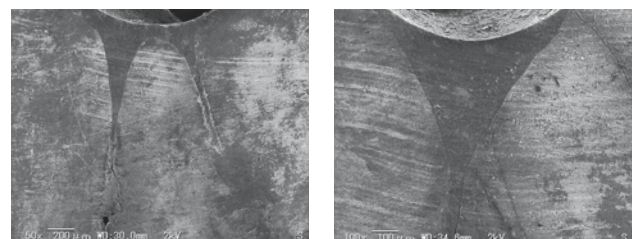


Photograph courtesy of Dr. Satoshi Fukumoto, Tohoku University, Japan

This HEMA-free formulation also prevents hydrolysis at the bonding interface for long-term stability and retention. The self-etch primer conditions the enamel surface to make it more reactive that in turn enhances the flow of the sealant paste into the pits and fissures.

Effective Delivery

An efficient non-drip, fuss-free syringe design and an extra fine 27 gauge needle tip assures precise delivery of the smooth, bubble-free sealant without the hassle of overfilling the grooves, a common problem encountered with conventional delivery systems.



50 x 200µm

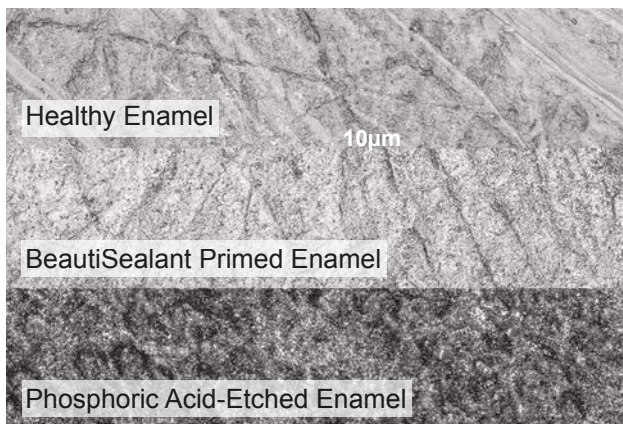
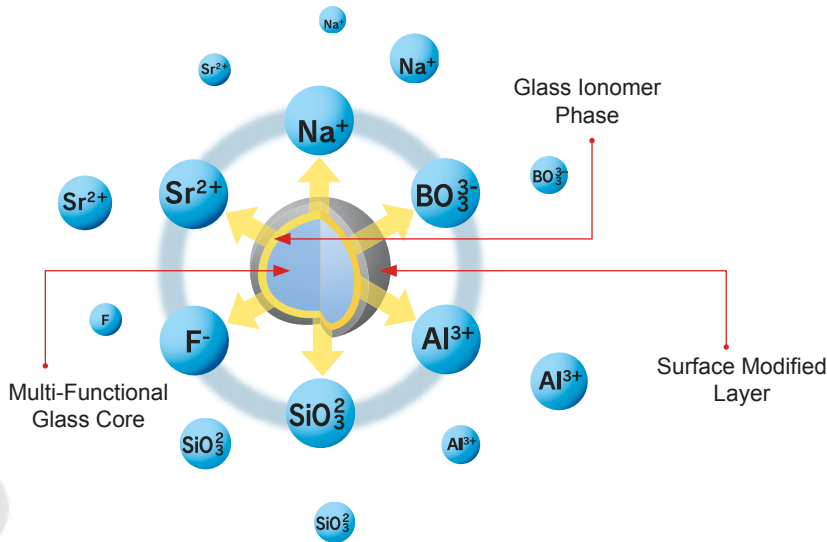
100 x 200µm

SEM photos of deep penetration into fissures



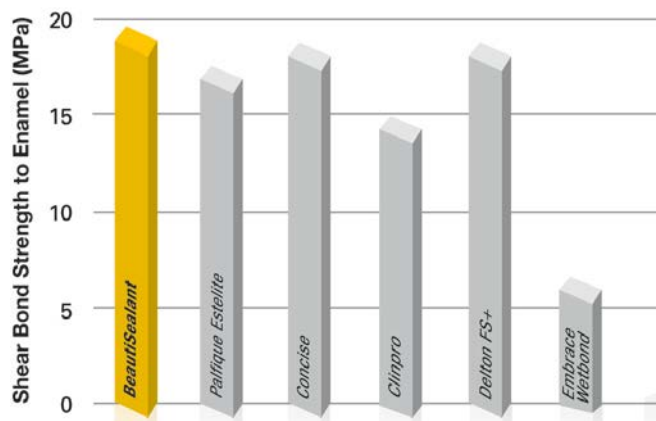
“Giomer Concept”

A member of the Giomer family of restoratives, BeautiSealant is based on Shofu’s proprietary S-PRG filler technology, where a stable glass ionomer phase is formed to provide the benefits of fluoride. The glass core with glass ionomer phase is protected with a trilaminar surface structure that allows controlled release and recharge of fluoride while maintaining structural integrity.



Remarkable Adhesion

BeautiSealant with its self-etch primer exhibits an equally durable bond to enamel as other traditional sealants that employ an aggressive phosphoric acid etch. The material surface is optimally cured to guarantee a reliable seal.



KEY ATTRIBUTES

- Fluoride rich environment
- Anti-bacterial and anti-cariogenic property
- Acid-buffering capacity that neutralizes the effects of acidogenic bacteria
- Arrests demineralization and promotes remineralization of enamel
- Unique Anti-Plaque effect

Steps to Complete Seal

Apply **Primer** to clean tooth and leave for 5 sec .



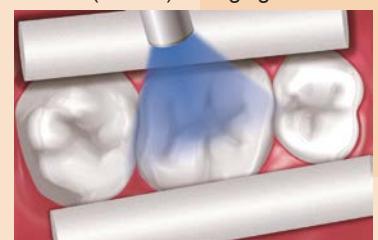
Gently air dry for 5 sec .



Apply Sealant.



Light cure with a halogen (20 sec) or LED (10 sec) curing light.



Case 1

Deep carious fissures



Fissures protected with BeautiSealant

Case 2

Deep fissure



Sealed with BeautiSealant

Photographs courtesy of Dr. Sushil Koirala

Order Information



BeautiSealant System [PN 1798]

BeautiSealant Paste 1.2g, BeautiSealant Primer 3mL,
Needle Tips x 15, Microbrush Fine (pink) x 50, V-Dish x 25



SHOFU DENTAL INDIA PRIVATE LIMITED

D-3/3,OKHLA INDUSTRIAL AREA,PHASE- II ,NEW DELHI, 110020 INDIA
TEL:(91) 11494 41400 FAX:(91) 11494 41401 E-mail: info@shofudental.co.in